

DAY RESIDUE

AU **ADELPHI UNIVERSITY** **DERNER INSTITUTE NEWSLETTER**

GORDON F. DERNER
INSTITUTE OF ADVANCED PSYCHOLOGICAL STUDIES

Inside this Issue

Happy Birthday Gordon F. Derner!	(Below)
NeuroQueries: Dr. Shahal Rozenblatt on Neuropsychological Testing	Page 2
Body as Culprit: A Conversation about Somatic Awareness in Cancer Patients with Kate Szymanski, Ph.D.	Page 3
Student Representative Bios	Page 6
Where's the Evidence? An Interview with Psychologist and Lawyer Glenna Rubin, Ph.D.	Page 7
Remember Your Roots! Derner Welcomes Alumni	Page 11
Internship Placements 2015-2016	Page 13
Student and Faculty Accomplishments	Page 14
Calls for Papers	Page 30
Summer Book Picks from the Editors	Page 34
Contact Us!	Page 35

Happy Birthday Gordon F. Derner!



Gordon F. Derner, Ph.D., was a mentor, humanist and a visionary who transformed psychology education. Join us on the 100th anniversary of his birth for a day of talks and panels – featuring guest lecturer Peter Fonagy, Ph.D.

~ **Celebration Events to take place November 13th and 14th, 2015** ~

Reunite with friends, connect with your fellow alumni, and meet current students from the Institute that bears Dr. Derner's name. *(Continue to Page 10 for schedule and further details...)*

NeuroQueries: Dr. Shahal Rozenblatt on Neuropsychological Testing

Jett Stone, M.A.

Shahal Rozenblatt, Ph.D., is a clinical neuropsychologist specializing in the evaluation and treatment of children and adults. He recently started his second year as a testing supervisor at Derner. I asked Dr. Rozenblatt some questions about his profession and the future of neuropsychological testing.

JS: How did you decide on a career in neuropsychology, and what excites you the most about the field?

SR: I have been interested in psychological testing since the early part of my graduate studies, focusing on personality assessment with a specific interest in forensics. There was an element of luck in my entry into the world of neuropsychology. I was at the end of internship when my supervisor received notice of a post-doctoral position at St. Charles Hospital in Port Jefferson, NY. He suggested I apply and the rest is history.



Neuropsychology is an extremely exciting field, as it is at the intersection of clinical psychology and neuroscience and requires a thorough understanding of brain-behavior relationships - what is normal or pathological, across the span of human development. The leaps we are making in neuroimaging only add to the value of neuropsychology. The field is at the forefront of research, helping us to understand the functional correlates of various brain regions, and it is integral to the development of clinical interventions and assessment of their effectiveness.

Neuroimaging has changed by leaps and bounds in past years and is continuing to improve in its complexity and ability to detect minute changes in brain structure and chemistry. Imaging helps us to understand what is happening in the brain with increasing precision, while neuropsychological testing helps us to understand the impact that those changes have on functioning.

JS: What about computerized testing as it relates to assessment?

SR: It is inevitable that testing will become increasingly computer based. There are advantages and disadvantages to this shift. The primary advantages are the ability to

instantly administer a test without the need for large testing kits, to rapidly obtain test results and to reduce scoring and administration errors. The main disadvantage, as I see it, is the loss of the interaction between the patient and clinician. There is always a give and take, and the pros and cons need to be weighed by the clinician.

Test interpretation and integration is the most complex part of the evaluation process. While many computer programs attempt to provide an interpretive report and may do so quite well, only the clinician has access to the panoply of data, including interviews, collateral information and other tests administered, enabling a more thorough consideration of what particular results mean. Clinical judgment and knowledge will always be the gold standard in this respect.

JS: You are also a psychotherapist in private practice. How has your neuropsych assessment experience impacted your psychotherapy case conceptualizations?

SR: A clinical neuropsychologist is, at his or her core, a clinical psychologist with advanced training in the neurobiological correlates of behavior. How much of this component is involved in a particular therapy case depends on the problem at hand. For example, anxiety disorders and post-traumatic stress disorder involve an over-active limbic system and reduced activity in the frontal lobes. Providing patients with this knowledge may help to reduce meta-anxiety about the need to control their emotions more effectively. By re-conceptualizing the disorder as a cross up in the brain circuitry that requires treatment in order to change this imbalance, I can reduce the stress involved in treatment and empower the person to be a more active participant.

For more information about Dr. Rozenblatt and his work, visit his website at: www.advancedpsy.com

Body as Culprit: A Conversation about Somatic Awareness in Cancer Patients with Kate Szymanski, Ph.D.

Laura Shiffrin, M.A.

LS: How did you first become interested in working on cancer as a psychological trauma?

KS: It started on a very personal level: more of my friends and some of my students started to be diagnosed with cancer. Then, I went to a conference at Sloan Kettering on treating cancer as a traumatic experience. There was discussion of alternative forms of psychological support used as a part of treatment plans like yoga, mediation, Tai Chi, and Qigong just to name a few.

LS: As a part of their medical treatment?

KS: As part of their medical treatment, but also as psychological treatment. They talked about a comprehensive approach - psychologists, social workers and physicians working together: they looked at the patient very holistically. They were emphasizing alternative, non-traditional, non-verbal forms of therapy, but they were not talking about evidence-based treatments. Someone in the audience asked, how do we know that this works? And, basically the answer from Sloan Kettering was, "we don't, but we keep doing it because people say it helps them." I knew from other work on trauma that the body and trauma are related, and that memory of trauma gets embedded in the body.



I was wondering why there isn't evidence for this in cancer patients, and I thought, wow, this is really a niche that needs to be filled - to look at these other ways of treating cancer. What people were talking about (at Sloan Kettering) in terms of working with the body sounded familiar in terms of how we work with other trauma survivors. The same body-based interventions used with veterans, sexual abuse survivors, and others, are also being used with cancer survivors. But what's different is that, with cancer, the body turns against you, it's internally driven.

LS: Do these body-based treatments target intrusive symptoms more than other trauma-related symptoms, because those intrusive symptoms tend to be bodily experiences?

KS: You know, in the research I've done (with fifth year student **Lilly Zecevic**), and presented this summer at the European Society for Trauma Stress Studies, we found that *body disconnection* correlates with all three PTSD clusters. We looked at two subtypes of body awareness: *body disconnection*, and *somatic awareness*. And these are two independent constructs. What we found was that *body disconnection* was positively related to post-traumatic stress symptoms. So our research suggests that being disconnected from your body is related to poor mental health functioning in cancer patients.

LS: So, at the Sloan Kettering conference, you learned that there was no empirical evidence for how or why body treatments work, and little discussion about the psychotherapeutic treatments that best serve cancer patients. Do you think our field has failed to address these questions?

KS: Well, one thing I would like to emphasize is the importance of a holistic approach in working with cancer patients. It is an illness that is considered traumatic, so I would hope,

first, when treating cancer patients, therapists don't only look at it as a medical illness but also as a traumatic experience. Also, what we as psychologists know from the field of trauma needs to be better understood and accepted by physicians, nurses, and social workers who work with cancer patients.

LS: So both disciplines need to learn from each other.

KS: Absolutely. And I don't think it is happening. So I don't know if it's because we (psychotherapists) feel this is a field that is dominated by physicians, and that only talk therapy is something we are allowed to implement - I think that we as psychologists need to be much more active. We need to think also about not just the illness, but also the medical treatments, and how they affect the patients' experience. Having cancer is really losing control over your body, and the treatment only facilitates that because of how your body might negatively respond in terms of side effects. Traditional psychotherapy is definitely helpful, but there's only so much that talk therapy can accomplish for traumatized patients, and we know this from the trauma literature. For cancer patients, because the body is the culprit, there might be some reluctance to using the body for healing. So how do we take control, use the body and mind-body connection for healing, and look at the body not as the enemy, even though temporarily our body turns against us. Also, with cancer, there is the infinity of it.

LS: So, yes, cancer tends to be a chronic trauma.

KS: Cancer has specific traits that are not shared by other traumas. In the case of sexual abuse, even if the abuse lasts years, at some point, there's an end. There is no end with cancer. Even if a patient reaches the five-year mark and is considered cured - that's the medical norm - they're still going for check-ups, for the rest of their lives. They have to live with the possibility of threat, of cancer recurrence.

LS: What would you say to students, especially in our generation of training, who are going to see an increasingly large number of patients be diagnosed with or in treatment for cancer?

KS: I would start by saying we need more research on the mechanisms behind somatic awareness. As a field, we need to embrace the concept of *somatic awareness* - there are somatic therapies, but they are not mainstream because of the lack of research. My suggestion for training clinicians is first to clearly understand that cancer is traumatic, and understand it as trauma with idiosyncrasies that differ from other traumas. And, to understand that - like with other traumas - there is a limit to what can be done with words. And that's a shady territory - we're not used to thinking that way. As clinicians, we need to be open to understanding that talk therapy is just one means of treatment. To understand that there are other forms - and they need much more empirical understanding, but let's not completely foreclose ourselves to those options.

Student Representative Bios

Dennis Higgins

I am Adelphi's representative to the Association for Psychological Science Student Caucus. The APS Student Caucus is a representative body of the student affiliates of the Association for Psychological Science. The APSSC is committed to promoting, protecting, and advancing the interests of scientifically oriented psychology in research, application, and the improvement of human welfare. As representative, I will be putting out information regarding Rally Week, an opportunity for you to join APS at a reduced rate (coming soon!). Also keep an eye out for Submission Week, when abstracts are due for both the APS Convention (May 26-29, 2016 in Chicago) and for the Student Research Awards (presented at the APS conference with a \$250 award) and Grants (\$500 for graduate research). If you have any questions, please reach out to me at dennishiggins@mail.adelphi.edu!



Mary Minges, M.A.

My name is Mary Minges and I am the 2015-2016 Adelphi Campus Representative to the APAGS Advocacy Coordinating Team (ACT). Be on the lookout for an email announcing an information session about the benefits and opportunities available to you as a member of APAGS and specifically ACT.

The mission of ACT is to, "empower students to bring their voices to bear on the important issues affecting our discipline and the public health through education, training and advocacy." ACT provides us with many opportunities to learn about issues relevant to our education and careers as psychologists as well as how we can be advocates in shaping the future of psychology. This network of graduate students engage in fostering awareness and legislative advocacy for both the profession as well as the science of psychology.

Stay tuned to learn more about the topics important to our field today, and the importance in gaining skills in advocacy efforts. This committee not only advocates for our education, but also for many issues important to us as psychologists.

Where's the Evidence? An Interview with Psychologist and Lawyer Glenna Rubin, Ph.D.

Erica Tanne, M.A.

Dr. Glenna Rubin received her Ph.D. at St. John's University and, in addition to supervising at Derner, teaches in the doctoral program at her alma mater. Erica Tanne spoke with her about her work.

ET: I thought I would begin by asking you about your transition from law to clinical psychology...

GR: The transition was really from psychology to law. I always thought I'd pursue psychology, but I somehow ended up on a detour after I graduated from college and went to law school. So, the transition back was fairly easy; I think as early as day one in law school - which I loved, by the way - I knew I would eventually end up in a psychology doctoral program.

ET: Then why law school at all?

GR: You know, there were a lot of sensible reasons and a lot of silly reasons. I knew doctoral programs were quite competitive and I couldn't imagine myself, after college, ending up in a place like Arkansas with only five other students, for five years. Law school applications were also shorter. The more sensible reasons were that I went to school in the 70s. With law I thought I could change the world. But I think with maturity I realized, if I make an impact on one or two people, I've lived a good life, I've served well. So, I was happy to return to psychology.



ET: So how long did you practice law?

GR: I practiced about six years.

ET: That's a big time investment.

GR: Yes, but it was a worthwhile investment. The education you gain as a lawyer is great in a lot of ways; I think it makes you a very good thinker, and you learn quite a bit. So, I think it was a good investment of my time, and a little money.

ET: Rumor has it that you often tell students: "I'm a lawyer, I'm looking for the evidence in your report... where is it?"

GR: Yes, one takeaway from that experience is, where is the evidence? It is true in law and in diagnostic assessment that you've got to be able to support what you say. And if there is no actual evidence, you have to be able to connect the dots and make your case solidly. It also makes you a good writer. If you're on law review, you become a much better writer.

ET: Law is, in some ways, a more rigid, black and white discipline. As you said earlier, in both law and clinical psychology, you need to connect the dots. But isn't clinical psychology composed of more shades of gray, with greater nuance?

GR: I agree with you, but to me, the analytic thinking from being a clinical psychologist is not totally different from one's thinking as a lawyer. Law is not black and white; if it were, there would be far fewer lawsuits and much less litigation. Law is all about the gray, and a good analysis is all about the gray. It's about seeing the bigger picture, the connections, and the inferences. It involves a lot of the same kinds of thinking skills. And depending on what you do, developing a sense of people is important in either profession.

ET: Did you know that you wanted to focus your career on diagnostic assessment when you started graduate school in clinical psychology?

GR: I hated testing as a student, up until I was asked to go on to internship. I'm embarrassed to admit this, but on one internship interview, when asked if I enjoyed testing, a laugh escaped. It was inconceivable to me at that point, that anyone would enjoy testing. It took a ton of time, and we were doing a standard battery for everybody. It had very little meaning for me. We were also making big leaps of interpretation based on very little data. I also didn't know what I was doing. I didn't know what I was doing was particularly useful for me, and it took me forever to write reports. So I didn't like testing at all, and I couldn't imagine that anybody did. It would be the last thing I could imagine myself making a very happy career out of.

ET: When did that change for you?

GR: It might have changed after internship. I had an opportunity to do infant assessment, which I had observed once, but had not been trained on. This job was available, and I said, "Oh, I could do that." So I started working in early intervention on teams with speech therapists, physical therapists, social workers, and occupational therapists. I was getting the big picture, and understanding different aspects, such as "what kind of language skills do you have? What's your muscle tone like?" I was learning how all of those things create the person. I did a year-long seminar with my testing guru, Nelson Dorta, and that's really where I learned how to evaluate. And once I really understood the process tools, I loved it and felt it would really be useful to my patients.

ET: For how long did you work in the area of early intervention?

GR: Probably about 15 years. I think working with infants and toddlers is a great training experience. You see how our whole set of skills, including motor skills, language skills, and relating skills form us, affect with whom we spend time, and how we see the world. Following that experience, I became really interested in neuropsychology and did training at the Fielding Institute.

ET: Sometimes psychologists will do testing for children as part of a school admissions process. I have heard that in some cases, the psychologist teaches the WISC or the WAIS to that student so they can perform better. Have you encountered this? What do you think about this practice?

GR: I have looked with a skeptical eye at test reports, particularly for application to gifted programs. You know, there are all kinds of bus drivers, and there are all kinds of psychologists. I've done testing for people who were seeking admissions for their kids to a gifted program and I'll make a case with my data if there's a case to be made, even if they don't exactly meet whatever their criteria is. But, I think you could check my scoring and you'd arrive at the same score. I don't think you are doing a parent or a child any favors if you try to help them *improve* their scores. I'm not in the city where it's even more competitive but what I see on Long Island are a lot of highly anxious kids who are pushed into academic programs that are not really for them. They are pushed into Honors and AP classes. These are okay students that are solidly grade level, but they are not Honors or AP students. A tremendous amount of pressure is placed on these kids, to their detriment. There's a great deal of anxiety going around.

ET: Have you noticed a change in anxiety levels in children over the years?

GR: I see a great deal of anxiety. And of course it's a skewed sample. I'm seeing kids who are anxious, who are stressed, who are struggling to make the cut, and sometimes the cut is not a reasonable cut for them. The pressure comes from the schools, from the parents, and from them, because they are in competition with their peers. It's a hell of a way to spend a childhood.

ET: Speaking of anxiety, how do you manage your time?

GR: I write in the wee hours of the morning. I need space and I need time. And, you know I used to work until three or four in the morning to get it all done, but I can't do that anymore. When you go to a neuropsychology conference, one of the conversations you will always hear in the elevator is "How many reports do you have? How many reports do you have to write up?" It's a time consuming endeavor.

ET: Do you also see patients for therapy?

GR: Oh yes. I don't usually see patients I assess, but I always liked a balance. Psychology, law, I worked for a ballet company for a little while... that was while I was a lawyer. I did this with a Long Island ballet company. I was never a dancer, just a big enthusiast.

Happy Birthday Gordon F. Derner! (...Continued from Page 1)

Friday, November 13th, 2015



March 10, 1977, Gordon Derner (center) at psychology lecture at The Waldorf School.

A Celebration of Gordon F. Derner's Life and Legacy

Thomas Dixon Lovely Ballroom,
Ruth S. Harley University Center
9am-5:30pm

Featuring guest lecturer Peter Fonagy, Ph.D., head of the department of Clinical, Educational and Health Psychology at University College London and renowned expert on psychoanalysis.

Evening Reception

Campbell Lounge, Center for Recreation
and Sports
6pm-9pm

Saturday, November 14th, 2015

Workshop on Metallization-Based Theory and Therapy, with Peter Fonagy Ph.D.

Thomas Dixon Lovely Ballroom,
Ruth S. Harley University Center
8am-9am - Registration and Continental Breakfast
9am-5pm - Workshop
\$125

For more information visit:

derner.adelphi.edu/newsevent/a-celebration-of-gordon-f-derners-life-and-legacy



Peter Fonagy, Ph.D.

Remember your Roots! Derner Welcomes Alumni

Carolida Steiner, Ph.D. '77

Have you visited Adelphi lately? If so, you may have been surprised by the feel of the campus. For those that have not been back for a while, here are some updates:

The Ruth S. Harley Student Union is still standing. So is Swirbul Library. As of this writing, the Nexus Building and Welcome Center is still under construction, but the handicapped-accessible Performing Arts Center is new. The campus is adorned with sculptures. Some, like the Giant Disco Man, are funny while others, like one commemorating 9/11, are serious.



The Derner Ph.D. Alumni Chapter hopes that you visit. Come with family. Come with friends. Come on your own! To find your way around, use the online campus map (www.about.adelphi.edu/files/2014/06/campus-map-2014.pdf). Here is some more information to make your visit better:



The Derner Institute is no longer on the third floor of the Business Building. It is across Cambridge Avenue, on the third floor of the Hy Weinberg Building. Stop by and say "hello" to **Dean Barber** or a favorite faculty member. Be sure to sign the new Alumni Guest Register, which is kept by **Janet Baronian** (Telephone: 516/877-4801), Executive Assistant to the Dean.

Also visit the University Archives and Special Collections. It houses the Derner Alumni Collection and the Louis Ormont Collection. The Derner Alumni Collection is new and, as it grows, it will serve as a resource to researchers. Our alumni collection showcases alumni accomplishments, from books, journal articles and contributions to professional

organizations. Are you interested in donating a book, article, or memorabilia from your organization? If so, let us know.

Get an Alumni ID card at the Office of Public Safety and Transportation (Telephone: 516/877-3500) in Levermore Hall. This card can be used to access Swirbul and other Adelphi libraries and to get a free database consultation or other help from April Grey (agrey@adelphi.edu), Subject Librarian for Psychology. The Alumni ID card can also be used to get discounts for professional conferences, cultural events, and academic software.



Enjoy dance, theater, or music at the Performing Arts Center. Besides exceptional performances, this handicapped-accessible venue offers convenient parking. Information on performances through May 13, 2016, is available online (www.aupac.adelphi.edu/upcoming-performances/all-events).



Attend one of many free public lectures or other University events. (www.events.adelphi.edu/events/cultural-events/lectures). In October, there will be a lecture by James McBride, author of The Color of Water: A Black Man's Tribute to His White Mother.

Shelley Culbertson, a policy analyst at the RAND Corporation, on the "Education of Syrian Refugees in Jordan, Turkey, and Lebanon" will be lecturing for free in November.

Feel like sharing photos? Post them to Facebook (www.facebook.com/DernerPh.D.AlumniChapter). We'd love to see them!



As a reminder, the University is on an academic calendar so check ahead to determine what will be open when you visit. You can also contact **Carolida Steiner** (drcarol26@msn.com), Coordinator of the Self-Guided Derner Tour.

The previous issue of *Day Residue* (Spring 2015) included an article titled "Securely Attached: Introducing the Derner Alumni Association". Here's an update on our Alumni Association's activities: The Derner Ph.D. Alumni Chapter (D-PAC) had a brunch in Toronto, site of APA's 2015 Annual Convention. The event, a first for the organization, was coordinated by **Tanya Cotler**.

Still ahead is a 10th year party: Coordinated by **Amy Vigliotti**, it is for alumni who started the program in 2005. Also ahead are our first ever Class Parties (!), one coordinated by **Gwen Alter** and one coordinated by **Debbie Ramirez**.

The Derner Institute has approximately 1,200 doctoral alumni. We hope many of you will become active in the Derner Ph.D. Alumni Chapter. Right now, we are looking for volunteers to coordinate Class Parties in 2016. If you're interested, please get in touch.

Finally, I want to thank **Emma Forrester**, **Jett Stone**, and **Rachel Small** for giving alumni a voice in *Day Residue*, the student newsletter. Their generosity provides alumni a window into what's happening at Derner today. It also lets current students know that they can stay securely attached for many years after graduation.

Internship Placements 2015-2016

Now in its third year of training students, the Derner Internship Consortium was approved for an APA accreditation site visit this fall. Derner student internship placements for the 2015-2016 year include:

Lenox Hill Hospital	Wilford Hall Ambu/Lackland
Derner - WAWI/AUSCC	SCO Family Services, Briarwood, NY
North Central Bronx	Derner - SUNY SCC
Bellevue Hospital	Bellevue Hospital
NY Harbor VA Medical Center	Naval Medical Center, VA
Derner - Long Beach Reach	Federal Bureau of Prisons, NC
California Pacific Medical	Maimonides Medical Center

Congratulations!

Student Accomplishments

Dissertations Proposed

On July 8th, 2015, **Jerald R. Gardner** proposed his dissertation:

Temporal Proximity in Alliance Rupture-Repair Events: Significance to Overall Treatment Outcome

Adviser: Chris Muran

On June 24th, 2015, **Masha Borovikova** proposed her dissertation:

In Other Words: On Speaking and (Mis)Understanding

Adviser: Karen Lombardi

In June 2015, **Philip Bender** proposed his dissertation:

Watching Movies and Experiencing Empathy

Adviser: Joel Weinberger

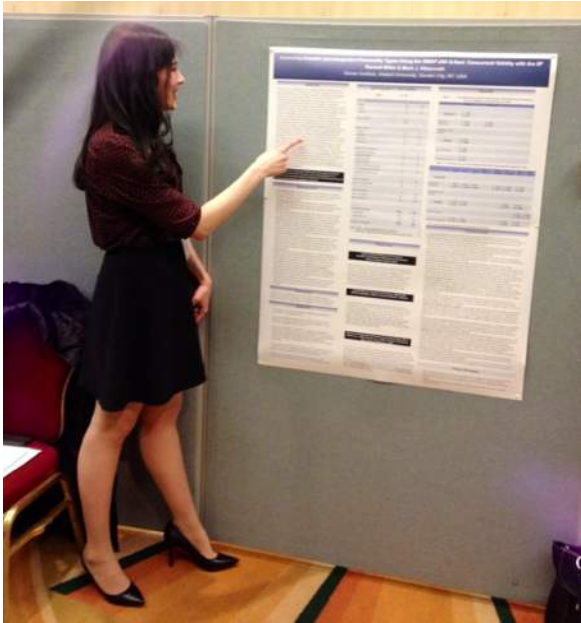
Honors and Awards

Hadley Johnson received a **Division 39 Scholar Award** for her poster: **Johnson, H.** (2015, April). *Listening for Ana: A content analysis of pro-anorexia music*. Poster presented at the Annual Spring Meeting of Division 39 of the American Psychological Association, San Francisco, CA.

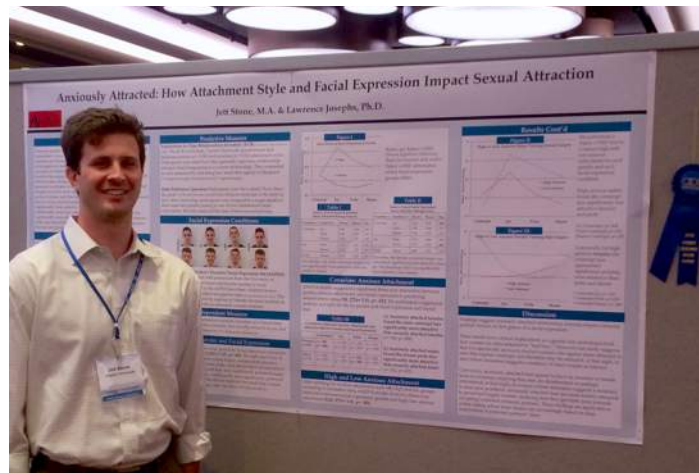
On April 24th, 2015, **June Lee Kwon** was **accepted into the Multicultural Concern Committee of Division 39 of APA's Scholars Program** at the Annual Spring Meeting of Division 39 of the American Psychological Association, San Francisco, CA.



In August 2015, **Saryn Levy** was awarded the **George Stricker Fellowship** for her manuscript, "Relationship Between Interpretation, Alliance and Outcome in Psychodynamic Psychotherapy: Control of Therapist Effects and Assessment of Moderator Variable Impact," soon to be published in the *Journal of Nervous and Mental Disease*. **Sarah Bloch-Elkouby** and **Seth Pitman** received second place awards in the Stricker Fellowship competition.



Racheli Miller was selected for a **fellowship at the Columbia University Center for Psychoanalytic Training and Research**.



Jett Stone received the **APS Student Research Award** for his poster: **Stone, J., & Josephs, L.** (2015, May). *Anxiously attracted: How attachment style and facial expression impact sexual attraction*. Poster presented at the 27th Annual Convention of the Association for Psychological Science, New York, NY.

Publications and Presentations

Ambrose, M. L., Szymanski, K., Lombardi, K., & Newirth, J. (2015, June). *To ease the pressure inside: Regulating affect through the body*. Poster presented at the 46th International Annual Meeting of the Society for Psychotherapy Research, Philadelphia, PA.

Ardalan, F., Tanis, T., **Ladha, A.**, **Reyes, M.**, Galynker, I., & Cohen, L. (2015, May). *The relationship between self-esteem and impulsivity in mood disorders*. Poster presented at the 168th Annual Meeting of the American Psychiatric Association, Toronto, CA.

Barber, J. P., Milrod, B., Rudden, M. G., **Solomonov, N.**, McCarthy, K. S., Sharpless, B.A., Graf, E., Kunik, L., Gallop, R., & Chambless, D. L. (2015, June). *Mediators in the Cornell Penn Panic Psychotherapy Study*. Paper presented at the 46th International Annual Meeting of the Society for Psychotherapy Research, Philadelphia, PA.

Barber, J. P., & **Solomonov, N.** (2016). Psychodynamic theories. In J. C. Norcross, G. R. VandenBos, & D. K. Freedheim (Eds.), *APA handbook of clinical psychology: Vol. 2. Theory and research*. Washington, DC: American Psychological Association.

Barber, J. P., **Zilcha-Mano, S.**, & Constantino, M. J. (in press). Psychodynamic and interpersonal psychotherapies. In R. DeRubeis & D. Strunk (Eds.), *Oxford handbook of mood disorders*. New York, NY: Oxford University Press.

Bloch-Elkouby, S., Muran, J. C., & Gorman, B. S. (2015, June). *Patients' and therapists' agreement about patients' interpersonal problems and therapy outcome - A method paper*. Paper presented at the 46th International Annual Meeting of the Society for Psychotherapy Research, Philadelphia, PA.

Bucci, C., & Brumariu, L. E. (2015, May). *How does early attachment influence later cognitive ability?* Presented at the 27th Annual Convention of the Association for Psychological Science, New York, NY.

Capps, K., Fiori, K., **Mullin, A. S. J.**, & Hilsenroth, M. J. (2015). Patient crying in psychotherapy: Who cries, and why? *Clinical Psychology & Psychotherapy*, 22, 208-220.

Chin, J. L., Desormeaux, L., Sawyer, K., **Ladha, A.**, McCormick, M., Remer, P., Alvarez, A., & Porter, N. (2015, August). *Leadership training for global and diverse leaders*. Symposium presented at the 123rd Annual Convention of the American Psychological Association, Toronto, CA.

Chui, H., **Zilcha-Mano, S.**, & Barber, J. P. (2015, June). *Changes in dependency and self-criticism in treatments for depression*. Paper presented at the 46th International Annual Meeting of the Society for Psychotherapy Research, Philadelphia, PA.

Denckla, C. A., & Bornstein, R. F. (2015). Toward a more nuanced conceptualization of interpersonal distancing: Differential relationships of adaptive and dysfunctional detachment to stress-based anxiety in college students. *Personality and Individual Differences*, 82, 148-152.

Denckla, C. A., Bornstein, R. F., Mancini, A. D., & Bonanno, G. A. (2015). Extending the construct validity of dependency among conjugally bereaved adults. *Assessment*, 22, 385-393.

Dinger, U., **Zilcha-Mano, S.**, Dillon, J., & Barber, J. P. (2015). Treatment adherence and competence in psychotherapy research. In R. L. Cautin & S. O. Lilienfeld (Eds.), *The encyclopedia of clinical psychology* (Vols. 1-5). Hoboken, NJ: Wiley-Blackwell.

Eidlitz, L. (2015, April). Psychotherapy case presented at the Derner Institute Grand Rounds, Garden City, NY.

Fiori, K. L., **Denckla, C. A.**, Gonsalves, V., **Ambrose, M. L.**, Gomes, D., & Bornstein, R. F. (2015, May). *Toward an interactionist perspective on the dependency-crying relationship: Differential Impact of presence of others in dependent and nondependent college students*. Poster presented at the 27th Annual Convention of the Association for Psychological Science, New York, NY.

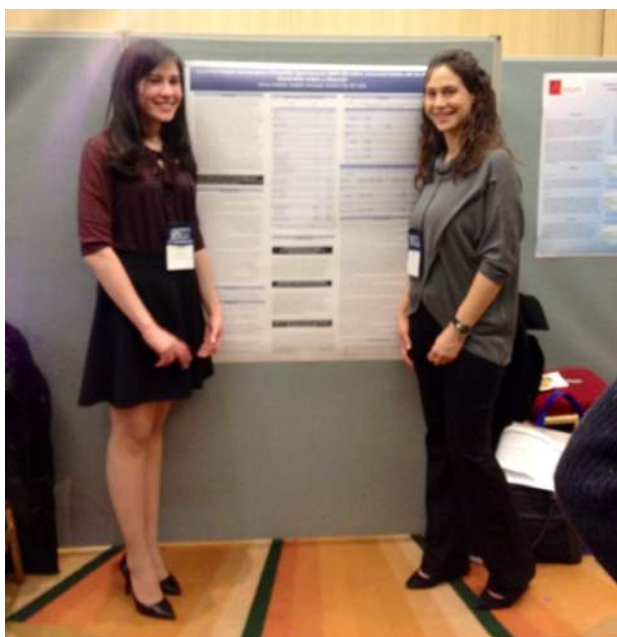
Forrester, E., & Szymanski, K. (2015, March). *The effect of trauma integration on the use of metaphors and sentence structure: A narrative approach*. Paper presented at the Annual Convention of the Society for Personality Assessment, Brooklyn, NY.

Fuertes, J. N., Anand, P., Haggerty, G., **Kestenbaum, M.**, & Rosenblum, G. C. (2015). The physician-patient working alliance and patient psychological attachment, adherence, outcome expectations, and satisfaction in a sample of rheumatology patients. *Behavioral Medicine*, 41(2), 60-68.

Fuertes, J. N., Rubinstein, S., **Reyes, M.**, lampornpipopchai, P., Mujeeb, S., Smith, C. R., & **Toporovsky, A.** (in press). The physician-patient working alliance in hemodialysis treatment. *Behavioral Medicine*.

Fuertes, J. N., Rubinstein, S., **Reyes, M.**, lampornpipopchai, P., **Toporovsky, A.** (2015). *Psychological and interpersonal factors in hemodialysis treatment*. Poster presented at the 123rd Annual Convention of the American Psychological Association, Toronto, CA.

Gardner, J. R., Muran, J. C., Gorman, B. S., Eubanks, C., Safran, J. D., & Winston, A. (2015, June). *Temporal proximity in alliance rupture-repair events: Significance to overall treatment outcome*. Paper presented at the 46th International Annual Meeting of the Society for Psychotherapy Research, Philadelphia, PA.



Gavrilis, F. C., & Bornstein, R. F. (2015, March). *Cultural impact on dependency and detachment: Comparison of Greek and American adults*. Poster presented at the Annual Convention of the Society for Personality Assessment, Brooklyn, NY.

Giuseppone, K. R., Gherasim, L. R., & Brumariu, L. E (2015). *Does future time perspective explain the relation between attachment and depression in middle childhood? Evidence from Romania*. Presented at the Biennial Meeting of the Society for Research on Child Development, Philadelphia, PA.

Gill, K., Quinero, J. M., Poe, S. L., **Moreira, A. D.**, Brucato, G., Corcoran, J. M., & Girgis, R. R. (2015). Assessing suicidal ideation in individuals at clinical high risk for psychosis. *Schizophrenia Research*, 165(2-3), 152-156.

Goetz, J. M., **Pitman, S. R.**, Tanev, K. S., Pitman, R. K., & Chemtob, C. M. (in press). Mixed handedness in identical twins discordant for combat exposure in Vietnam: Relationship to posttraumatic stress disorder. Manuscript submitted for publication.



Greenblatt, C., & Conway, F. (2015, August). *Minority stress, social support, and suicidality among transgender and genderqueer adults*. Poster presented at the 123rd Annual Convention of the American Psychological Association, Toronto, CA.

Halkitis, P. N., Kapadia, F., Bub, K. L., Barton, S., **Moreira, A. D.**, & Stults, C. B. (2015). A longitudinal investigation of syndemic conditions among young gay, bisexual, and other MSM: The P18 Cohort Study. *AIDS and Behavior*, 19(6), 970-980.

Hungr, C., Muran, J. C., & Safran, J. D. (2015, June). *Considering patient characteristics in therapy: Can shifts in the alliance over time and treatment outcome be predicted by patient pre-treatment interpersonal difficulties?* Paper presented at the 46th International Annual Meeting of the Society for Psychotherapy Research, Philadelphia, PA.

Johnson, H. (2015, August). *What don't we know about anorexia? Finding "Ana" in textual analyses of pro-anorexia lyrics*. Poster presented at the 123rd Annual Convention of the American Psychological Association, Toronto, CA.

Johnson, H. (2015, April). *Listening for Ana: A content analysis of pro-anorexia music*. Poster presented at the Annual Spring Meeting of Division 39 of the American Psychological Association, San Francisco, CA.

Knopf, L. E., Muran, J. C., Safran, J. D., Eubanks, C., Winston, A., & **Bloch-Elkouby, S.** (2015, June). *Personal agency as a change factor in a cognitive-behavioral therapy for personality disorders*. Paper presented at the 46th International Annual Meeting of the Society for Psychotherapy Research, Philadelphia, PA.

Kuprian, N., **Zilcha-Mano, S.**, & Barber, J. P. (2015, June). *Interpersonal mystery of the obsessive-compulsive personality disorder*. Paper presented at the 46th International Annual Meeting of the Society for Psychotherapy Research, Philadelphia, PA.

Kwon, J., & Bornstein, R. F. (2015, March). *Moderating impact of culture on interpersonal style: Dependency and detachment in Korean and American adults*. Poster presented at the Annual Meeting of the Asian Conference on Psychology & the Behavioral Sciences, Osaka, Japan.

Ladha, A. (2015, March). *Resist the temptation: Delayed gratification and leadership in college students*. Poster presented at the 86th Annual Meeting of the Eastern Psychological Association, Philadelphia, PA.

Ladha, A., Chin, J. L., & Desormeaux, L. (2015). Diversity leadership. *The Feminist Psychologist*, 42(1), 11.

Ladha, A., **Reyes, M.**, Ardalan, F., Tanis, T., Cohen, L., & **Shiffrin, L.** (2015, May). *Social support as a protective factor against lifetime suicide attempt in an inpatient psychiatric sample*. Poster presented at the 27th Annual Convention of the Association for Psychological Science, New York, NY.

Lehmann, M. E., **Levy, S. R.**, Hilsenroth, M. J., Weinberger, J., Fuertes, J. N., & Diener, M. J. (2015, June). *Evaluating pre-treatment patient insight as a factor in early therapeutic technique*. Poster presented at the 46th International Annual Meeting of the Society for Psychotherapy Research, Philadelphia, PA.

Lehmann, M. E., **Levy, S. R.**, Hilsenroth, M. J., Weinberger, J., Fuertes, J. N., & Diener, M. J. (2015). Evaluating pre-treatment patient insight as a factor in early therapeutic technique. *Journal of Psychotherapy Integration*, (25)3, 199.

Levy, S. R., Hilsenroth, M. J., & Owen, J. J. (2015, June). *Interpretation and outcome in psychodynamic psychotherapy: Patient-therapist variables and their interaction*. Paper presented at the 46th International Annual Meeting of the Society for Psychotherapy Research, Philadelphia, PA.

Miller, R. (2015, March). *Assessing anaclitic and introjective personality types using the SWAP-200 Q-Sort: Concurrent validity with the IIP*. Poster presented at the Annual Convention of the Society for Personality Assessment, Brooklyn, NY.

Minges, M., **Zilcha-Mano, S.**, & Barber, J. P. (2015, June). *Cocaine dependent patients display a singular profile of interpersonal distress*. Paper presented at the 46th International Annual Meeting of the Society for Psychotherapy Research, Philadelphia, PA.

Moreira, A. D., Halkitis, P. N., & Kapadia, F. (2015). Sexual identity development of a new generation of emerging adultmen: The P18 cohort study. *Psychology of Sexual Orientation and Gender Diversity*, 2(2), 159-167.

Moy, L., Curtis, R. C., Hien, D., Gorman, B. (2015, May). *Helpful or harmful? Online communities for non-suicidal self-injury*. Presented at the 27th Annual Convention of the Association for Psychological Science, New York, NY.

Mullin, A. S. J., & Hilsenroth, M. J. (2015, March). *Changes in object relations over the course of psychodynamic psychotherapy*. Paper presented at the Annual Convention of the Society for Personality Assessment, Brooklyn, NY.

Pitman, S. R., Hilsenroth, M. J., **Goldman, R. E.**, **Levy, S. R.**, **Siegel, D. F.**, **Miller, R.** (2015, June). *Therapeutic technique of APA expert therapists: Similarities and differences across theoretical orientations*. Panel presented at the 46th International Annual Meeting of the Society for Psychotherapy Research, Philadelphia, PA.

Pitman, S. R., Hilsenroth, M. J. (2015, March). *Interpersonal subtypes of anxiety disorder patients: Relationship to treatment variables*. Poster presented at the Annual Convention of the Society for Personality Assessment, Brooklyn, NY.

Reyes, M., **Ladha A.**, Ardalán, F., Tanis, T., Galynker, I., & Cohen, L. (2015, May). *The urge to drink: Correlates of alcohol abuse among a psychiatric inpatient sample*. Poster presented at the 168th Annual Meeting of the American Psychiatric Association, Toronto, CA.



Shiffrin, L., Szymanski, K. (2015, May). *The impact of spirituality on trauma-related symptoms in cancer patients*. Poster presented at the 27th Annual Convention of the Association for Psychological Science, New York, NY.

Smith, S. W., **Levy, S. R.**, Hilsenroth, M. J., Fiori, K. L., & Bornstein, R. F. (2015, March). *Relationship between patient SWAP-200 personality characteristics and therapist-rated alliance early in treatment*. Poster presented at the Annual Convention of the Society for Personality Assessment, Brooklyn, NY.

Solomonov N., & Barber J. P. (2015). What we know, what we do not know, and where are we heading? Efficacy and acceptability of psychological interventions for depression. *Epidemiology and Psychiatric Sciences*. 1-8. Advance online publication. doi:10.1017/S2045796015000815

Solomonov, N., McCarthy K., Keefe J. R., Bernard G., & Barber, J. P. (2015, June). *Examining the alliance-techniques relationship in psychodynamic therapy*. Paper presented at the 46th International Annual Meeting of the Society for Psychotherapy Research, Philadelphia, PA.

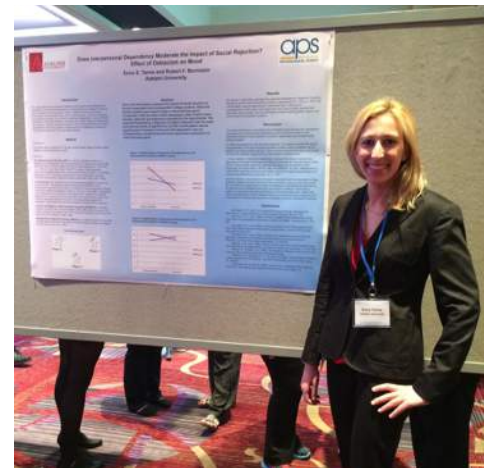
Stone, J. (2015, June 25). Bonding over Brain Surgery [The opinion pages]. *The New York Times*. Retrieved from <http://www.opinionator.blogs.nytimes.com/2015/06/25/bonding-over-brain-surgery>

Stone, J. (2015, May). Anxiously attracted: *How attachment style and facial expression impact sexual attraction*. Address and presentation at the 27th Annual Convention of the Association for Psychological Science, New York, NY.

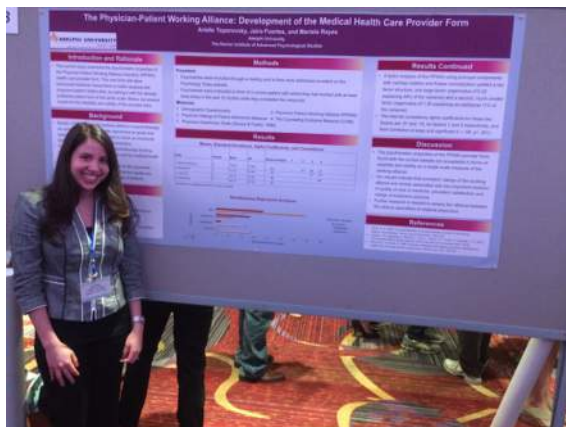
Stone, J., & Josephs, L. (2015, May). *Anxiously attracted: How attachment style and facial expression impact sexual attraction*. Poster presented at the 27th Annual Convention of the Association for Psychological Science, New York, NY.

Szymanski, K., Springer, C., & **Zecevic, L.** (2015). *The impact of somatic awareness on posttraumatic stress and posttraumatic growth in cancer patients*. Presented at the European Society for Traumatic Stress Studies, Vilnius, Lithuania.

Tanne, E., & Bornstein, R. F. (2015, May). *Does interpersonal dependency moderate the impact of social rejection? Effect of ostracism on mood*. Poster presented at the 27th Annual Convention of the Association for Psychological Science, New York, NY.



Taylor, J., Muran, J. C., Safran, J. D., & Winston, A. (2015, June). *Never had a friend like me: An exploration of friendship in the therapeutic alliance* Poster presented at the 46th International Annual Meeting of the Society for Psychotherapy Research, Philadelphia, PA.



Toporovsky, A., Fuertes, J. N., & **Reyes, M.** (2015, May). *The physician-patient working alliance: The physician's perspective*. Poster presented at the 27th Annual Convention of the Association for Psychological Science, New York, NY.

Zilcha-Mano, S., McCarthy, K. S., Dinger, U., Chambless, D. L., Milrod, B. L., Kunik, L., & Barber, J. P. (2015). Are there subtypes of panic disorder? An interpersonal perspective. *Journal of Consulting and Clinical Psychology*, 83(5), 938.

Zilcha-Mano, S., Roose, S. P., Barber, J. P., & Rutherford, B. R. (2015). Therapeutic alliance in antidepressant treatment: Cause or effect of symptomatic levels? *Psychotherapy and Psychosomatics*, 84(3), 177-182.

Zilcha-Mano, S., **Solomonov, N.**, **Chui, H.**, McCarthy, K. S., Barrett, M. S., & Barber, J. P. (in press). Therapist-reported alliance: Is it really a predictor of outcome? *Journal of Counseling Psychology*.

Upcoming: Alliance Focused Training

Consider attending this excellent workshop featuring many notable presenters – including some of Derner’s own esteemed faculty. Reduced registration fees for students.



Alliance-Focused Training: Research & Practice

A One-Day Science to Practice Workshop

Co-sponsored by

**The North American Chapter, Society for Psychotherapy Research
& The New School Department of Psychology**

Saturday, November 7, 2015

Co-Chairs: Jeremy D. Safran, J. Christopher Muran, & Catherine F. Eubanks

A half-century of psychotherapy research has demonstrated that the quality of the therapeutic alliance is one of the more robust predictors of treatment outcome across a range of therapeutic modalities. This one-day conference will explore cutting edge developments in the practice of training therapists to cultivate the skills of fostering the development of the alliance with “hard to reach” patients, and resolving alliance ruptures and therapeutic impasses when they occur. Panel discussions and workshops will focus on new developments in research, training and practice.

Invited speakers & workshop leaders: Jacques Barber, Jeffrey Binder, Louis Castonguay, Doris Chang, Catherine Eubanks, Micki Friedlander, Marvin Goldfried, Robert Hatcher, Laurie Heatherington, Clara Hill, Stanley Messer, Chris Muran, Jeremy Safran, Lisa Samstag, Michael Westerman

To register go to: <http://www.psychotherapyresearch.org/event/naspr-workshop>

Faculty Accomplishments

Honors and Awards

Katherine Fiori was nominated for **2015 Professor of the Year** by Adelphi University's Student Government Association.

Mark Hilsenroth received a **2015 Professor Recognition Award**, Adelphi University.

Publications and Presentations

Apavaloaie, L., & **Brumariu, L. E.** (2015). *Representations of parenting, teacher-student relationships, and social adjustment in Romanian preschoolers*. Presented at the Biennial Meeting of the Society for Research on Child Development, Philadelphia, PA.

Armistead, L., Jacob, S., Provenzano, F., Pearrow, M., Madigan, J., Klose, L., Jones, N., Klein, E. S., & **Boccio, D. E.** (2015, February). *From the ethics committee's inbox. Documented session*. Presented at the Annual Convention of the National Association of School Psychologists, Orlando, FL.

Barber, J. P., & Summers, R. F. (2015). Short-term psychodynamic psychotherapy. In J. Wright (Ed.), *International encyclopedia of the social and behavioral sciences* (2nd ed.) (pp. 344-348). Oxford, United Kingdom: Elsevier Ltd.

Boccio, D. E. (2015). A school-based suicide risk assessment protocol. *Journal of Applied School Psychology, 31*, 31-62.

Boccio, D. E. (2015). *Preventing and resisting administrative pressure to practice unethically*. [Ethics advisory bulletin]. Bethesda, MD: National Association of School Psychologists.

Boccio, D. E. (2015). *A brief guide to teaching professional ethics in a graduate preparation program*. [Ethics advisory bulletin]. Bethesda, MD: National Association of School Psychologists.

Boccio, D. E., Banilivy, M., Lazazzaro, N., Mancini, S., Cami, A., & Karch, K. (2015, April). *From school district to emergency department: Obstacles to continuity of care for suicide prevention*. Paper presented at the 48th Annual Conference of the American Association of Suicidology, Atlanta, GA.

Bornstein, R. F. (2015). Beyond projection: Performance based assessment. In T. M. Ortner & F. J. R. van de Vijver (Eds.), *Behavior Based Assessment in Psychology* (64-77). Gottingen, Germany: Hogrefe.

Bornstein, R. F. (2015). Personality assessment in the diagnostic manuals: On mindfulness, multiple methods, and test score discontinuities. *Journal of Personality Assessment*, *97*, 446-455.

Crits-Christoph, P., & **Barber, J. P.** (2015). Psychological treatments for personality disorders. In P. E. Nathan & J. M. Gorman (Eds.), *A guide to treatments that work* (5th ed.) (pp. 851-870). New York, NY: Oxford University Press.

Conway, F., & McLaughlin, C. K. (2015). Experiences of individuals with attention deficit hyperactivity disorder. In J. P. Antony & S. M. Shore (Eds), *College for students with disabilities: We do belong*. Philadelphia, PA: Jessica Kingsley Publishers.

Colli, A., Lingiardi, V., Gentile, D., Nassisi, V., Speranza, A., & **Hilsenroth, M. J.** (in press). Eating disorders and therapist emotional responses. *Journal of Nervous and Mental Disease*.

Curtis, R. C. (2015, June). *The power of evoking imagery in clinical work*. Presented at the 31st Annual Conference of the Society for the Exploration of Psychotherapy Integration, Baltimore, MD.

Curtis, R. C. (2015, July). *Loneliness, self-harm & suicide*. Presented at the 49th Congress of the International Psychoanalytic Association, Boston, MA.

Curtis, R. C. (2015, July). *Toward of general theory of motivation: Survival and survival of meaning as two basic motives*. Presented at the 14th European Congress of Psychology, Milan, Italy.

Brumariu, L. E. (2015). Parent-child attachment and emotion regulation. *New Directions for Child and Adolescent Development*, *2015(148)*, 31-45.

Brumariu, L. E., Bureau, J. F., Nemoda, Z., Sasvari-Szekely, M., & Lyons-Ruth, K. (2015). Attachment and temperament revisited: Infant distress, attachment disorganisation and the serotonin transporter polymorphism. *Journal of Reproductive and Infant Psychology*, 1-13.

Brumariu, L. E., & Lyons-Ruth, K. (2015). *Disorganized attachment in adolescence: Relations to severity of abuse and mother's helplessness and need for emotional support*. Presented at the Biennial Meeting of the Society for Research on Child Development, Philadelphia, PA.

Brumariu, L. E., Moore, M., & Lyons-Ruth, K. (2015). *Maternal anxiety and depressive symptoms across development: Impact on adolescent anxiety and depression*. Presented at the Biennial Meeting of the Society for Research on Child Development, Philadelphia, PA.

Bucci, W., Maskit, B., & Murphy, S. (2015). Connecting emotions and words: The referential process. *Phenomenology and the Cognitive Sciences*, 1-25.

Caligor, E., Roose, S. P., **Hilsenroth, M. J.**, & Rutherford, B. R. (2015). Why do another outcome study? *Psychoanalytic Inquiry*, 35, 150-168.

Castonguay, L. G., & **Muran, J. C.** (Eds.) (2016). *Practice-oriented research in psychotherapy: Building partnerships between clinicians and researchers*. Oxford, United Kingdom: Routledge.

Delgado, M. R., **Fareri, D. S.**, & Chang, L. J. (2015, May). *The influence of social context on reward processing and collaborative decisions*. Presented at the 27th Annual Convention of the Association for Psychological Science, New York, NY.

Doran, J., Safran, J. D., & **Muran, J. C.** (2016). The Alliance Negotiation Scale: A psychometric investigation. *Psychological Assessment*, 26. <http://dx.doi.org/10.1037/pas0000222>

Driessen, E., Hegelmaier, L. M., Abbass, A. A., **Barber, J. P.**, Dekker, J. J., Van, H. L., Jansma, E. P., & Cuijpers, P. (2015). The efficacy of short-term psychodynamic psychotherapy for depression: A meta-analysis update. *Clinical Psychology Review*, 42, 1-15.

Fabus, R., Sands, E., **Springer, C.**, & Dondorf, K. (2015). The relationship between perceptions of caregiving and carer contributions in an interview situation with a partner with aphasia. *Aphasiology*, 1-13.

Fareri D. S., Chang L. J., & Delgado M. R. (2015). Computational substrates of social value in interpersonal collaboration. *The Journal of Neuroscience*, 35, 8170-8180.

Fareri, D. S., Chang, L. J., & Delgado, M. R. (2015). *Mechanisms of social value in collaboration*. Presented at the New York Social and Affective Neuroscience Gathering, New York, NY.

Fareri, D. S., Gabard-Durnam, L., Goff, B., Flannery, J., Gee, D. G., Lumian, D. S., Caldera, C., & Tottenham, N. (2015). Normative development of ventral striatal resting-state connectivity in humans. *NeuroImage*, 118, 422-437.

Fuertes, J. N., Gelso, C., Owen, J., & Cheng, D. (2015, June). *Measuring and understanding countertransference*. Paper presented at the 46th International Annual Meeting of the Society for Psychotherapy Research, Philadelphia, PA.

Fuertes, J. N., & Hoffman, A. (in press). Alcohol consumption and abuse among college students: Alarming rates among the best and the brightest. *College Student Journal*.

Gazzillo, F., Lingiardi, V., Del Corno, F., Genova, F., **Bornstein, R. F.**, Gordon, R. M., & McWilliams, N. (2015). Clinicians' emotional responses and Psychodynamic Diagnostic Manual personality disorders: A clinically relevant empirical investigation. *Psychotherapy, 52*, 238-246.

Gee, D. G., Gabard-Durnam, L., Telzer, E. H., Humphreys, K. L., Goff, B., Shapiro, M., Flannery, J., Lumian, D. S., **Fareri, D. S.**, Caldera, C. J., & Tottenham, N. (2015). *Maternal buffering of human amygdala-prefrontal circuitry during childhood but not adolescence*. Presented at the Social and Affective Neuroscience Society, Boston, MA.

Gilbert, L., Raj, A., **Hien, D. A.**, Stockman, J., Terlikbayeva, A., & Wyatt, G. (2015). Targeting the SAVA (substance abuse, violence, and AIDS) syndemic among women and girls: A global review of epidemiology and integrated interventions. *Journal of Acquired Immune Deficiency Syndromes, 69*.

Gordon, R. M., Gazzillo, F., Blake, A., **Bornstein, R. F.**, Etzi, J., Lingiardi, V., McWilliams, N., Rothery, C., & Tasso, A. F. (2015). The relationship between theoretical orientation and countertransference expectations: Implications for ethical dilemmas and risk management. *Clinical Psychology & Psychotherapy*.

Gold, S., **Hilsenroth, M. J.**, Kuutmann, K., & Owen, J. (2015). Therapeutic Alliance in the personal therapy of graduate clinicians: Relationship to the alliance and outcomes of their patients. *Clinical Psychology & Psychotherapy, 22*, 304-316.

Hien, D. A., Campbell, A. N., Ruglass, L. M., Saavedra, L., Mathews, A. G., Kiriakos, G., & Morgan-Lopez, A. (2015). Maximizing effectiveness trials in PTSD and SUD through secondary analysis: Benefits and limitations using the National Institute on Drug Abuse Clinical Trials Network "Women and Trauma" study as a case example. *Journal of Substance Abuse Treatment*.

Hien, D. A., Levin, F. R., Ruglass, L. M., López-Castro, T., Hu, M. C., Papini, S., Cohen, L., & Herron, A. (2015). Combining seeking safety with sertraline for PTSD and alcohol use disorders: A randomized controlled trial. *Journal of Clinical and Consulting Psychology, 83*(2), 359.

Hilsenroth, M. J., Kivlighan, D., & Slavin-Mulford, J. (2015). Structured supervision of graduate clinicians in psychodynamic psychotherapy: Alliance and technique. *Journal of Counseling Psychology*, *62*, 173-183.

Josephs, L. (2015). How children learn about sex: A cross-cultural and cross-species perspective. *Archives of Sexual Behavior*, *44*.

Josephs, L. (2015). *Narcissism and adult romantic relationships*. Presented at the Psychology Club of Adelphi University, Garden City, NY.

Josephs, L. (2015). Treating sexual disgust in integrative couple's therapy. *The Integrative Therapist*, *1*, 12.

Josephs, L. (2015, June). *Treating sexual disgust in integrative couple's therapy*. Presented at the 31st Annual Conference of the Society for the Exploration of Psychotherapy Integration, Baltimore, MD.

Lackner, R. J., **Moore, M. T.**, Minerovic, J. R., & Fresco, D. M. (2015). Explanatory flexibility and explanatory style in treatment-seeking patients with Axis I psychopathology. *Cognitive Therapy and Research*, 1-8.

Leichsenring, F., Luyten, P., **Hilsenroth, M. J.**, Abbass, A., **Barber, J. P.**, Keefe, J., Leweke, F., Rabung, S., & Steinert, C. (2015). Psychodynamic therapy meets evidence-based medicine: A systematic review using updated criteria. *Lancet Psychiatry*, *2*, 648-660.

Lingiardi, V., McWilliams, N., **Bornstein, R. F.**, Gazzillo, F., & Gordon, R. M. (2015). The Psychodynamic Diagnostic Manual, Version 2 (PDM-2): Assessing patients for improved clinical practice and research. *Psychoanalytic Psychology*, *32*, 94-115.

López-Castro, T., Hu, M. C., Papini, S., Ruglass, L. M., **Hien, D. A.** (2015). Pathways to change: Use trajectories following trauma-informed treatment of women with co-occurring posttraumatic stress disorder and substance use disorders. *Drug and Alcohol Review*, *34*(3), 242-251.

Macfie, J., **Brumariu, L. E.**, & Lyons-Ruth, K. (2015). Parent-child role-confusion: A critical review of an emerging concept. *Developmental Review*, *36*, 34-57.

Maskit, B., **Bucci, W.**, & Murphy, S. (2015, June). *A computer program for tracking the evolution of a psychotherapy treatment*. Paper presented at the 2015 Conference of the North American Chapter of the Association for Computational Linguistics - Human Language Technologies, Denver, CO.

Mendelsohn, R. (2015). Freud, Sigmund (1856-1939). In R. L. Cautin & S. O. Lilienfeld, (Eds.), *The encyclopedia of clinical psychology* (Vols. 1-5). Hoboken, NJ: Wiley-Blackwell.

Milrod, B., Chambless, D. L., Gallop, R., Busch, F. N., Schwalberg, M., McCarthy, K. S., Gross, C., Sharpless, B. A., Leon, A. C., & **Barber, J. P.** (2015). Psychotherapies for panic disorder: A tale of two sites. *The Journal of Clinical Psychiatry*. doi: 10.4088/JCP.14m09507

Muran, J. C. (2015, February). *The impact of an alliance-focused training on psychotherapy process and outcome*. Presented at the University of Trier, Trier, Germany.

Muran, J. C. (2015, February). *Ruptures in the therapeutic alliance: Challenges & opportunities for training & change*. Presented at the University of Trier, Trier, Germany.

Muran, J. C. (2015, June). *Developing the therapist in relation: Ruptures, reflection and the expressive position*. Paper presented at the 46th International Annual Meeting of the Society for Psychotherapy Research, Philadelphia, PA.

Muran, J. C., & Lutz, W. (2015). A train of thought: 25 years of psychotherapy research. *Psychotherapy Research*, 25(3), 277-81.

Muran, J. C., & Safran, J. D. (in press). Therapeutic alliance ruptures. In A. E. Wenzel (Ed.), *Sage encyclopedia of abnormal & clinical psychology*. New York: Sage Publications.

Muran, J. C., Safran, J. D., & Eubanks, C. (2015, June). *Alliance focused training (parts 1 & 2)*. Workshop conducted at the 31st Annual Conference of the Society for the Exploration of Psychotherapy Integration, Baltimore, MD.

Murphy, S., **Bucci, W.**, & Maskit, B. (2015, June). *Putting feelings into words: Cross-linguistic markers of the referential process*. Paper presented at the 2015 Conference of the North American Chapter of the Association for Computational Linguistics – Human Language Technologies, Denver, CO.

Newirth, J. (2015). Psychoanalysis' past, present, and future: Sherlock Holmes, Sir Lancelot, and the Wizard of Oz. *Psychoanalytic Psychology*, 32(2), 307.

Newirth, J. (2015, February). *Wrestling with the demons of the unconscious: The struggle to create a personal psychoanalytic voice*. Presented at the the William Alanson White Colloquium Series, New York, NY.

Newirth, J. (2015, April). *Working with pre-symbolic patients in the autistic contiguous position*. Panel conducted at the Annual Spring Meeting of Division 39 of the American Psychological Association, San Francisco, CA.

Newirth, J. (2015, April). *Working with pre-symbolic patients in the autistic contiguous position: The development of trust*. Paper presented at the Annual Spring Meeting of Division 39 of the American Psychological Association, San Francisco, CA.

Newirth, J. (under review). Pleasure, desire and symbolization in the psychoanalytic intersubjective relationship. *Contemporary Psychoanalysis*.

Newirth, J. (in preparation). From Frankenstein to zombies: Cultural and evolving conceptions of the unconscious. *Psychoanalytic Psychology*.

Papini, S., Sullivan, G. M., **Hien, D. A.**, Shvil, E., & Neria, Y. (2015). Toward a translational approach to targeting the endocannabinoid system in posttraumatic stress disorder: A critical review of preclinical research. *Biological Psychology*, *104*, 8-18.

Porcerelli, J. H., **Bornstein, R. F.**, Porcerelli, D., & Arterbery, V. E. (2015). The complex role of personality in cancer treatment: Impact of dependency-detachment on health status, distress, and physician-patient relationship. *Journal of Nervous and Mental Disease*, *203*(4), 264-268.

Reisert, L. M., & **Fiori, K. L.** (2015). *The association between adoption status and attachment styles during the transition to college*. Presented at the 2015 Meeting of the National Conference on Undergraduate Research, Cheney, WA.

Ruglass, L. M., Papini, S., Trub, L., & **Hien, D. A.** (in press). Psychometric properties of the modified PTSD symptom scale among women with PTSD and substance use disorders receiving outpatient group treatments. *Journal of Traumatic Stress Disorders and Treatment*.

Sapountzis, I. (2015). Musing on being and reflecting on all that can be found: Introduction to Tuber's, Conway's and Sossin's papers. *Journal of Infant, Child, and Adolescent Psychotherapy*, *14*(3), 272-279.

Sharpless, B. A., & **Barber, J. P.** (2015). Transference/countertransference. In R. L. Cautin & S. O. Lilienfeld, (Eds.), *The encyclopedia of clinical psychology* (Vols. 1-5). Hoboken, NJ Wiley-Blackwell.

Shimberg, J., & **Josephs, L.** (in press). Empathy as a mediator of attitudes towards infidelity among college students. *Journal of Sex and Marital Therapy*.

Simon, S., Cain, N. M., Samstag, L. W., Meehan, K. B., & **Muran, J. C.** (2015). Assessing interpersonal subtypes in depression. *Journal of Personality Assessment*. doi: 10.1080/00223891.2015.1011330

Szymanski, K., Springer, C., & Lemley-Craver, C. (2015). *Does the label matter? - The impact of acknowledged and unacknowledged rape on mental wellbeing*. Presented at the European Society for Traumatic Stress Studies, Vilnius, Lithuania.

Trimble, J. E., & **Chin, J. L.** (2015). *Diversity and leadership*. Thousand Oaks, CA: Sage.

Winarick, D. J., & **Bornstein, R. F.** (2015). Toward resolution of a longstanding controversy in personality disorder diagnosis: Contrasting correlates of schizoid and avoidant traits. *Personality and Individual Differences*, 79, 25-29.

Zickgraf, H. F., Chambless, D. L., McCarthy, K. S., Gallop, R., Sharpless, B. A., Milrod, B. L., & **Barber, J. P.** (2015). Interpersonal factors are associated with lower therapist adherence in cognitive-behavioural therapy for panic disorder. *Clinical Psychology & Psychotherapy*. doi:10.1002/cpp.1955

Want to see **Alumni Accomplishments** in the next *Day Residue*?

Alumni: Please email the editors with your latest honors, awards, publications, and presentations.

We would love to share your accomplishments with the Derner community!

Calls for Papers

New York State Conferences

When?	Where?	<i>Submissions Due!</i>	More info...
Psychodynamic Psychoanalytic Research Society 2016 National Meeting			
1/12 - 1/17/2016	New York, NY	11/2/2015	www.pprsonline.org/meeting-submission-posters
14th Annual Mid-Year Conference on Psychology, Religion, and Spirituality			
3/11 - 3/12/2016	Brooklyn, NY	1/4/2016	www.sjcny.edu/long-island/academics/programs-departments/psychology/mid-year-conference/proposals
Eastern Psychological Association Annual Meeting			
3/2 - 3/6/2016	New York, NY	1/15/2015	www.easternpsychological.org/i4a/pages/index.cfm?pageid=3526

106th Annual Meeting of the American Psychopathological Association			
3/3 - 3/5/2016	New York, NY	1/15/2016	www.appassn.org/poster.html
World Association for Experiential Psychotherapy and Counseling 12th Conference (PCE 2016 Conference)			
7/20 - 7/24/2016	New York, NY	1/15/2016	www.nypcrrc.org/registration-1

National Conferences

When?	Where?	<i>Submissions Due!</i>	More info...
12th Annual International Conference on Clinical Ethics Consultation			
5/19 - 5/22/2016	Washington, DC	11/6/2015	www.iccec2016.com/index.php?id=6
Midwestern Psychological Association 88th Annual Meeting			
5/5 - 5/7/2016	Chicago, IL	11/10/2015	www.midwesternpsych.org/page-1265201
Western Psychological Association 96th Annual Meeting			
4/28 - 5/1/2016	Long Beach, CA	11/16/2015	www.westernpsych.org/wpa-convention-call-for-papers
Collaborative Perspectives on Addiction 4th Annual Meeting			
3/18 - 3/19/2016	San Diego, CA	11/20/2015	http://research.alcoholstudies.rutgers.edu/cpa
American Psychology-Law Society Annual Conference			
3/10 - 3/12/2016	Atlanta, GA	TBA	www.apls-students.org/ap-ls-conference.html
Division of Psychoanalysis (39) 36th Annual Spring Meeting			
4/6 - 4/10/2016	Atlanta, GA	12/1/2015	www.apadivisions.org/division-39/news-events/news/2015/call-for-posters.aspx

Association for Psychological Science 28th Annual Convention			
5/26 - 5/29/2016	Chicago, IL	12/1/2015 <i>(symposiums); 1/31/2016 (posters)</i>	www.psychologicalscience.org/index.php/convention/call-for-submissions#.Vb5GJZNViko
American Psychological Association 124th Annual Convention			
8/4 - 8/7/2016	Denver, CO	12/1/2015	http://apps.apa.org/ConvCall/Call4Programs.pdf
Southwestern Psychological Association Annual Convention			
4/8 - 4/10/2016	Dallas, TX	12/9/2015	www.swpsych.org/conv_papers.php
Rocky Mountain Psychological Association 86th Annual Convention			
4/14 - 4/16/2016	Denver, CO	1/15/2016	www.rockymountainpsych.org/convention-info.html
North American Chapter of the Society for Psychotherapy Research (NASPR) 2016 Conference			
Fall 2016	Berkeley, CA	February/March 2016 (TBA)	www.psychotherapyresearch.org/news/197751/Pre-Announcement-Fall-2016-Chapter-Meeting.htm
International Society for Traumatic Stress Studies 32nd Annual Meeting			
11/10 - 11/12/2016	Dallas, TX	TBA	www.istss.org/meetings-events/events-calendar/istss-32nd-annual-meeting.aspx

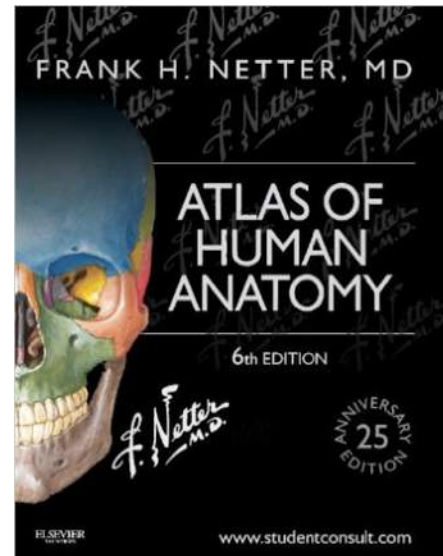
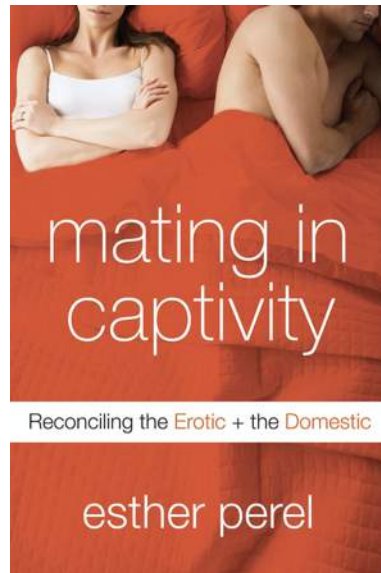
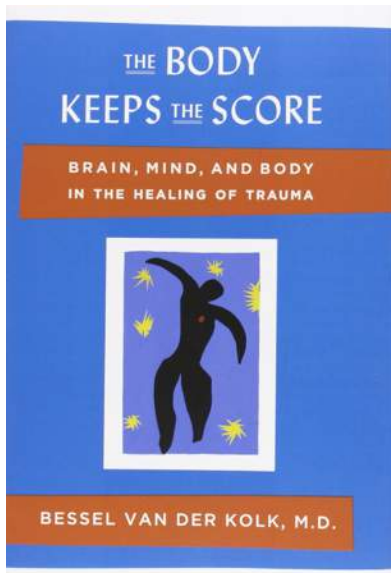
International Conferences

When?	Where?	<i>Submissions Due!</i>	More info...
Annual Conference of the British Association for Counseling and Psychotherapy Research (Co-hosted by SPR UK Chapter)			
5/20 - 5/21/2016	Brighton, UK	11/6/2015	www.psychotherapyresearch.org/resource/resmgr/UK-SPR/BACP_SPRConferenceAnnounceme.pdf

8th World Congress of Behavioural and Cognitive Therapies			
6/22 - 6/25/2016	Melbourne, Australia	11/6/2015	www.wcbct2016.com.au/call-for-abstracts
2nd International Conference on Loss, Bereavement, & Human Resilience in Israel and the World: Facts, Insights, & Implications			
1/12 - 1/14/2016	Eilat, Israel	11/30/2015	www.ovdan-eilat2016.com/#!oral-presentation-guidelines/c20mt
Society for Psychotherapy Research 47th International Annual Meeting			
6/22 - 6/25/2016	Jerusalem, Israel	12/1/2015	www.spr2016.com/call.html
International Association for Cross-Cultural Psychology 23rd International Congress			
7/30 - 8/3/2016	Nagoya, Japan	12/1/2015	www.iaccp2016.com/key-dates
Caribbean Regional Conference on Psychology			
11/7 - 11/11/2016	Port au Prince, Haïti	12/1/2015	www.crcp2016.org/index.php/submissions/4-crcp2016-call
Society for the Exploration of Psychotherapy Integration XXXII Annual Meeting			
6/16 - 6/19/2016	Dublin, Ireland	12/18/2015	www.sepiweb.org/resource/resmgr/sepi2016/sepi2016_call_for_submission.pdf
International Association for Relationship Research 2016 Conference			
7/20 - 7/24/2016	Toronto, Ontario, Canada	1/15/2016	www.iarr.psych.utoronto.ca/papers.html
International Association for Child and Adolescent Psychiatry and Allied Professions 22nd World Congress			
9/18 - 9/22/2016	Calgary, Alberta, Canada	3/1/2016	www.iacapap2016.org/important-dates
International Congress of Behavioral Medicine			
12/7 - 12/10/2016	Melbourne, Australia	TBA	www.icbm2016.com/call-for-abstracts

Editors' Summer Book Picks

Day Residue editors **Emma Forrester**, **Jett Stone**, and **Rachel Small** chose these three as their favorite summer reads. Can you guess who backs each book?



Keep in Touch!

Alumni: We very much want to hear from you! Please stay tuned for the upcoming semester, when we plan to reach out to many of you to learn about your post-Derner careers, projects, and accomplishments. If you would like to submit an article, essay, or other piece of literature for the next issue of Day Residue, please do not hesitate to contact any of us on the newsletter team. We look forward to hearing from you!

Spread the Word!

Know of any alumni who have not received this newsletter but would like to? Let us know the updated e-mail addresses of anyone whose current information may not be in the Derner administration's records.

Contact Us

Your feedback is extremely valuable to us and will help enhance future issues. Did you find the newsletter interesting? What would you like to see in future issues? Please let us know your opinions and comments:

Emma Forrester M.A., Editor-in-Chief: eforrester@gm.sl.c.edu

Jett Stone M.A., Editor: jettstone@gmail.com

Rachel B. Small, M.A., Layout Editor: rachelsmall@mail.adelphi.edu

www.derner.adelphi.edu/news-and-events/newsletter/day-residue

Stay Tuned for... **DAY RESIDUE Spring 2016...**